

VOL.

[01]

www.tmleadercontract.com

NEW IN
OUTDOOR DEBUT
WHO WE ARE
NEW DESIGNS
CAMPAINING REVEAL
NEW COLLABS
OUR ICONS
TM HOTEL PROJECTS

WHERE IDEAS TAKE SHAPE_WHERE MATERIALS FIND PURPOSE. | NOT JUST FURNITURE_A WAY OF THINKING
SPACE. PRECISION IN EVERY LINE_CHARACTER IN EVERY PIECE. | DESIGN THAT BEGINS WITH VISION AND ENDS IN
EXPERIENCE. | CRAFT MEETS INNOVATION_CONCEPT BECOMES MATTER.
THIS IS NOT A COLLECTION_THIS IS OUR UNIVERSE.

THIS IS TM

*Presentamos nuestra primera colección outdoor.
Piezas pensadas para perdurar, donde diseño, materia y confort conviven con equilibrio.
Una nueva forma de vivir el exterior desde la misma exigencia que el interior.*

A NEW CHAPTER
We present our first outdoor collection. Pieces designed to endure, where design, material and comfort coexist in balance. A new way to experience outdoor spaces with the same standards we bring to interiors.

OUT DOOR COLLECTION

NEW IN TM

At TM Leader Contract, we understand design as a way to create spaces with identity. We develop solutions where design, functionality, innovation and character coexist naturally. Its highest expression. Every project reflects our commitment to quality, continuous improvement and attention to detail, meeting the demands of contemporary spaces.

[En TM Leader Contract entendemos el diseño como una forma de crear espacios con identidad. Desarrollamos soluciones donde diseño, funcionalidad, innovación y carácter conviven de forma natural. Cada proyecto refleja nuestro compromiso con la calidad, la mejora continua y la atención al detalle, respondiendo a las exigencias del espacio contemporáneo.]

ABOUT US + 26.000m²
factory | production facilities

+ 280 employees
growing | human team

1982
since | experience area



PURE

IDENTITY

vo g d



NEW DESIGN

EVERY TM_STUDIO DESIGN IS A STATEMENT OF INTENT. Innovation, quality and character come together in pieces crafted to endure and become iconic. This is design that sets trends and redefines expectations.

[CADA DISEÑO DE TM_STUDIO ES UNA DECLARACIÓN DE INTENCIÓN. Innovación, calidad y carácter se encuentran en piezas pensadas para perdurar y convertirse en icónicas. Este es el diseño que marca tendencia y redefine expectativas.]

BY™

UNEX PECTED

find the

WHERE IDEAS TAKE SHAPE_ WHERE MATERIALS FIND PURPOSE. | NOT JUST FURNITURE_ A WAY OF THINKING
SPACE. | PRECISION IN EVERY LINE_ CHARACTER IN EVERY PIECE. | DESIGN THAT BEGINS WITH VISION AND
ENDS IN EXPERIENCE. | CRAFT MEETS INNOVATION_ CONCEPT BECOMES MATTER. | THIS IS NOT A COLLECTION_
THIS IS A UNIVERSE.



TM

real is the new
**UNEX
PECTED**

the power of
**UNEX
PECTED**

find the
**UNEX
PECTED**



Integral

PROJECTS

TM HOTELPROJECTS

With TM Hotel Projects, we approach turnkey contract projects in a comprehensive way, supporting every stage of the process from the initial idea to final delivery. From design to installation, we develop bespoke solutions for hotels, restaurants, and hospitality environments, creating functional, coherent spaces with a distinct identity.

[Con TM Hotel Projects abordamos proyectos contract llave en mano de forma integral, acompañando cada fase del proceso desde la idea inicial hasta la entrega final. Del diseño a la instalación, desarrollamos soluciones a medida para hoteles, restaurantes y entornos hospitality, creando espacios funcionales, coherentes y con identidad propia.]

+ 40 countries
expansion | international presence

+ 19.920
rooms | exclusive designs

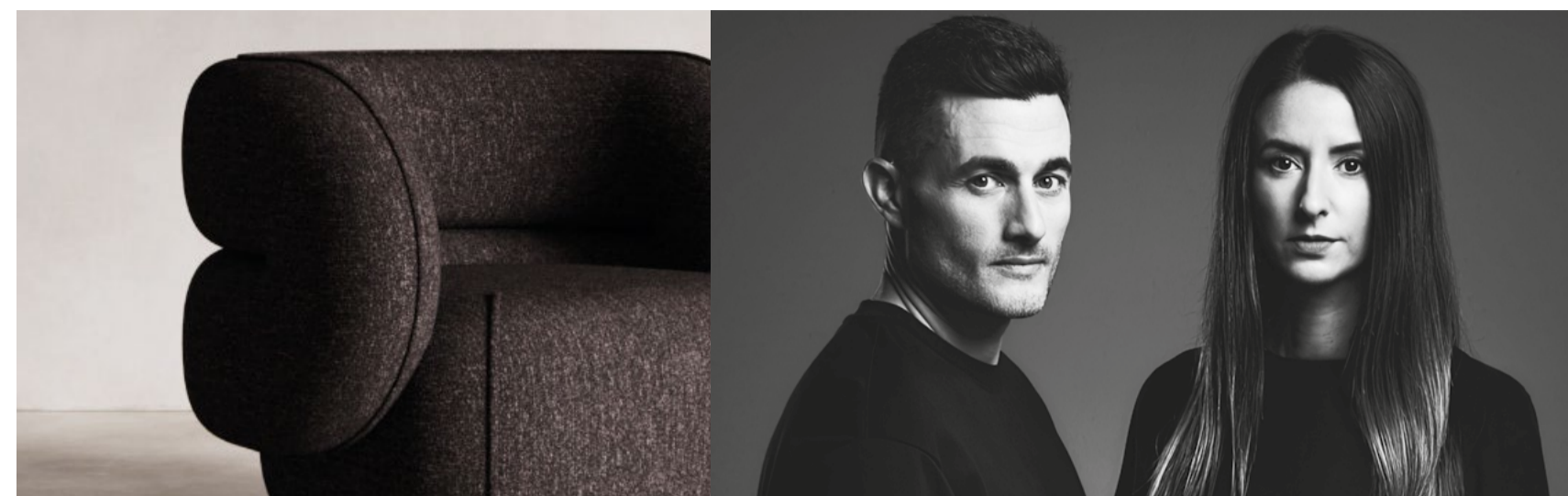


ESPA
CIAS
Y
SUE
S
PAC
C
O
R
I
E
S
E
X
P
E
R
I
E
N
C
I
A
S
D
I
S
T
I
N
T
I
B
I
L
I
T
A
D
E
S

COLLABS 2026

We invest in partnerships with world-renowned designers and emerging talents, creating projects where creativity, innovation and excellence converge. Every collaboration is an opportunity to explore ideas, push boundaries and bring unique pieces to life that set trends. At TM Leader Contract, every partnership strengthens our commitment to design, quality and innovation, and propels our work into the future.

[Apostamos e invertimos en colaboraciones con diseñadores de talla mundial y nuevos talentos, creando proyectos donde creatividad, innovación y excelencia se encuentran. Cada colaboración es una oportunidad para explorar ideas, desafiar límites y dar vida a piezas únicas que marcan tendencia. En TM Leader Contract, cada alianza refuerza nuestro compromiso con el diseño, la calidad y la innovación, y proyecta nuestro trabajo hacia el futuro.]



Yonoh Creative Studio over 15 years of experience and a style that blends functionality, aesthetics and detail. Awarded with Red Dot, iF Design Award, Good Design and German Design Award, their work has global reach and contemporary vision.

[Yonoh Creative Studio con más de 15 años de experiencia y un estilo que combina funcionalidad, estética y detalle. Galardonados con Red Dot, iF Design Award, Good Design y German Design Award, su trabajo tiene alcance internacional y visión contemporánea.]

VLAD TOLOCHKO



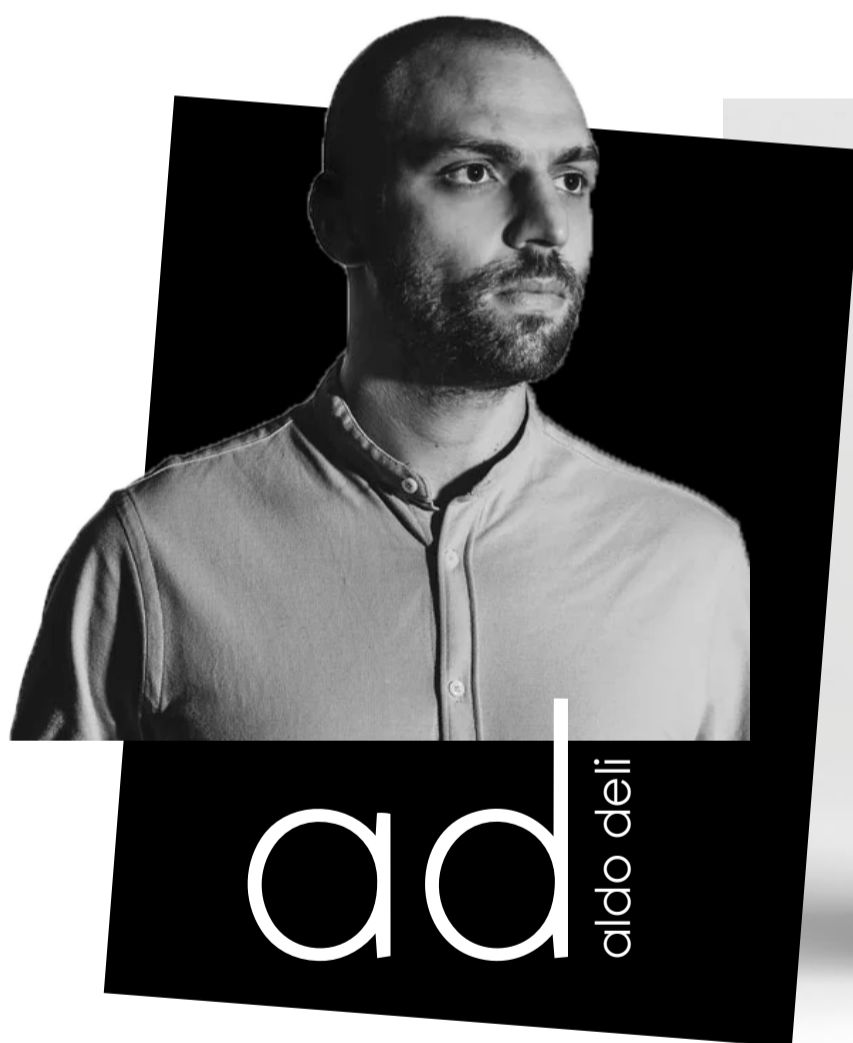
Vladislav Tolochko, Ukrainian designer, blends innovation, materials and form with contemporary sensitivity. Winner of the Interior of the Year award and recognized in Ukrainian Design the Very Best of 2019, as well as finalist in Interior of the Year 2021, his work explores fresh perspectives in furniture and contemporary design, bringing expressive and modern proposals.

[Vladislav Tolochko, diseñador ucraniano, combina innovación, materiales y forma con sensibilidad contemporánea. Ganador del premio Interior of the Year y reconocido en Ukrainian Design the Very Best of 2019, además de finalista en el Interior of the Year 2021, su trabajo explora nuevas perspectivas en mobiliario y diseño contemporáneo, aportando propuestas frescas y expresivas.]

gallega

Vicente Gallega, Spanish designer, leads one of the most influential studios in contemporary design. He founded his practice over 30 years ago and has received numerous national and international awards, including recognition at the German Design Awards. His work has been featured in exhibitions, publications and lectures, and he holds prominent roles in European design associations, reinforcing his impact on the contemporary design scene.

[Vicente Gallega, diseñador español, lidera uno de los estudios con mayor presencia en el diseño contemporáneo. Fundó su estudio hace más de 30 años y ha recibido numerosos premios nacionales e internacionales, incluyendo reconocimientos en los German Design Awards. Ha participado ampliamente en exposiciones, publicaciones y conferencias, y ocupa cargos relevantes en asociaciones de diseño europeas, reforzando su influencia en el panorama actual.]



Aldo Deli, Italian architect and designer, has led his own studio since 2019, focusing on form, materials and emotional engagement. He has been recognized with the Silver A' Design Award 2019, a notable international design accolade. His work brings innovation, character and functionality to every project.

[Aldo Deli, arquitecto y diseñador italiano, lidera su propio estudio desde 2019 con un enfoque en formas, materiales y emoción. Ha sido reconocido con el Silver A' Design Award 2019, un galardón internacional destacado en diseño de producto. Su trabajo aporta innovación, carácter y funcionalidad a cada proyecto.]



INTERDESIGN



[designed by]

Karim

Karim Rashid, Egyptian designer, returns for his second collaboration with us. With over 4,000 designs and 400 international awards, his work spans furniture, objects and spaces. His pieces are in the permanent collections of MoMA and Centre Pompidou, redefining contemporary design.

[Karim Rashid, diseñador egipcio, regresa para su segunda colaboración con nosotros. Con más de 4.000 diseños y 400 premios internacionales, su trabajo abarca mobiliario, objetos y espacios. Sus piezas forman parte de colecciones permanentes en el MoMA y el Centre Pompidou, redefiniendo el diseño contemporáneo.]



BE ICONIC

NOW

THE COLLECTION

The TM Leader Contract catalogue brings together more than 400 references in constant evolution. A collection conceived to support the diversity of uses, rhythms, and needs of the contemporary contract sector.

[El catálogo TM Leader Contract reúne más de 400 referencias en permanente evolución. Una colección pensada para acompañar la diversidad de usos, ritmos y necesidades del contract contemporáneo.]

CHAIRS [sillas]



ALISA
2352



AXEL
9276



AXEL
9276-06



AXEL
2308



BELA
2362



CORA
2333-02



CORA
2333-06



DIRA
2237



DIRA
2237-06



DIRA
2237-03



DUNA
9377-06 A



DUNA
9377 A



EIEN
2369



GOTLAND
2318-06



GOTLAND
2318-06 B



HANA
2283-06



HEMSON
2338



HEMSON
2339



ILA
2212



JADE
2330



JADE WIDE
2331



KEEL
2370



KERN
2220



LIF
2280



LIF
2280 T



LIGNE
2371



LYS
2365



MAGA
318



MAGU
326



MANI
2235-06



MASAL
2059



MAURO
2360



MERY
2328-06



MINA
2304



MINA
2304-01 T



MIREL
2313



NAGI
2363



NAOKO
349



NARA
2317-T



NARA
2317



NEA
2279



NEA
2279 T

CHAIRS [*sillas*]



ARMCHAIRS [*sillones*]

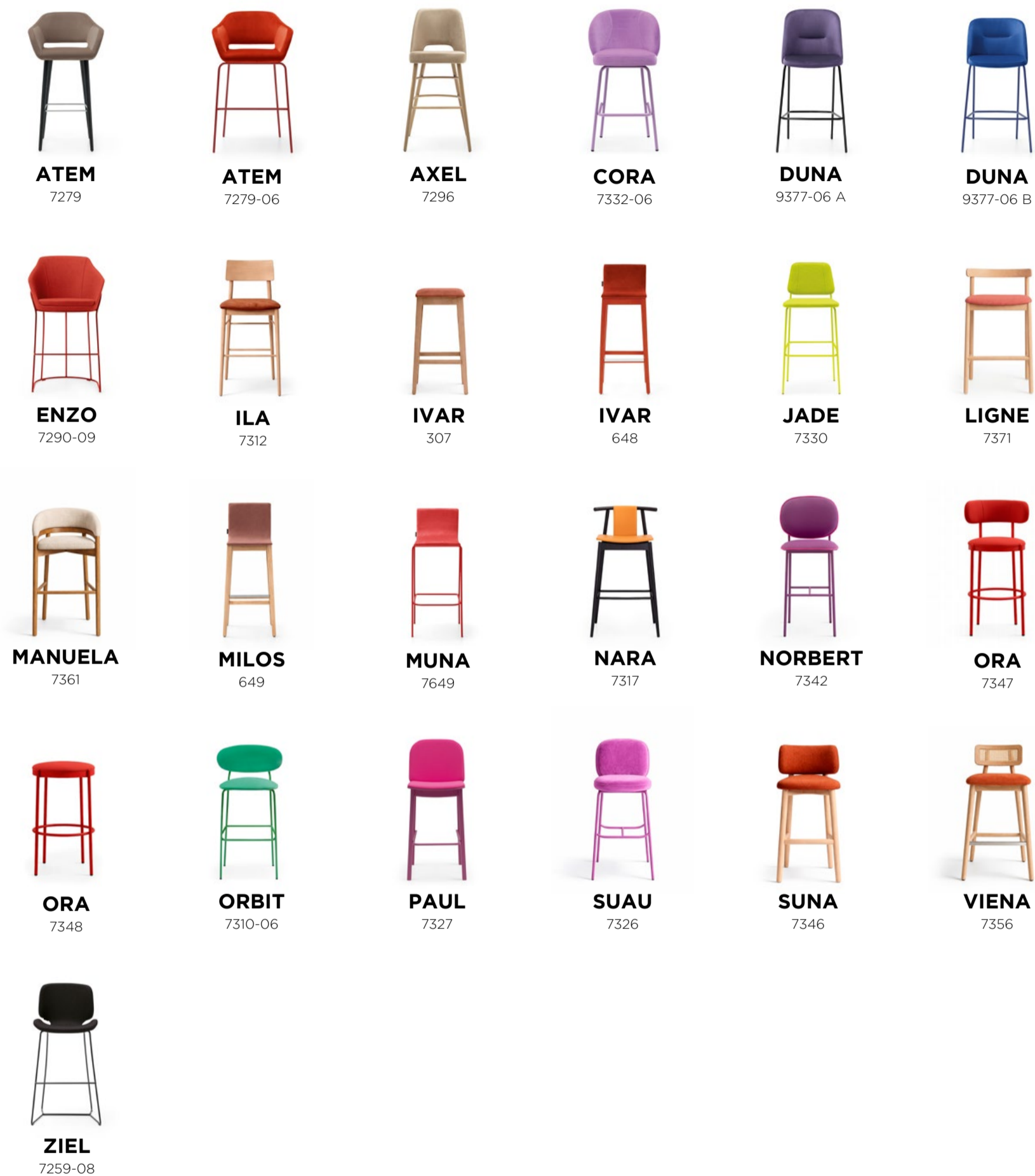


ARMCHAIRS [*sillones*]



STOOLS [taburetes]

LOUNGE CHAIRS [butacas]



LOUNGE CHAIRS [butacas]



POUFS [poufs]



SOFAS [sofás]



SOFAS [sofás]



CIOTTOLO
970



ELVIS
859



EVAN
962



EVAN
962



KISS
972



KOSMIC
971



LUTER
979



MANS
938-1R



MANS
938-2R



MIAMI
954



PAD
958



PAD
958



PEBBLE
966



POD
980



SUSHI
959



SWAN
948



SWAN
948



SOM
981



TEO
878



VERTEBRA
973



WHALE
982



ZOE
918 W

MODULES [modulares]



IVY
939



PAD
958



PEBBLE
966



POD
980



SUSHI
959



SWAN
948

SOFA BEDS [sofás cama]



ABRA
944



AROX
967



COSME
983



CUFF
984



DALA
920



DALIA
975



DANKA
947



DOCK
985



ESME
986



FRED
987



HANE
988



IRIS
942



JANN
949



KAMAR
934



LIMPO
935



MAMBA
910

SOFA BEDS [sofás cama]



MARC
880



MENO
933



MENO
933 B



PALMA
989



PERSEO
941



SARA
974



SAIDA
922



SWELL
997



TUKAN
998



URIK
916



WAKA
961

BANCS [bancos]



EMMA
999



NOIR
950



GALA
952



QUORE
704



SIRO
705



TARO
706

BASES [bases]



ARIEL
5202



DAR
5204



ELBA
5206



LIRA
5205



RINA
5201



SKAI
5203

HEADBOARDS [cabezales]



CLAM
5107



EKKO
5108



GEA
5109



HELA
5101



ISLET
5110



LINK
5111



SURI
5105



NEKA
5102



ODISEO
5112



PAGE
5113

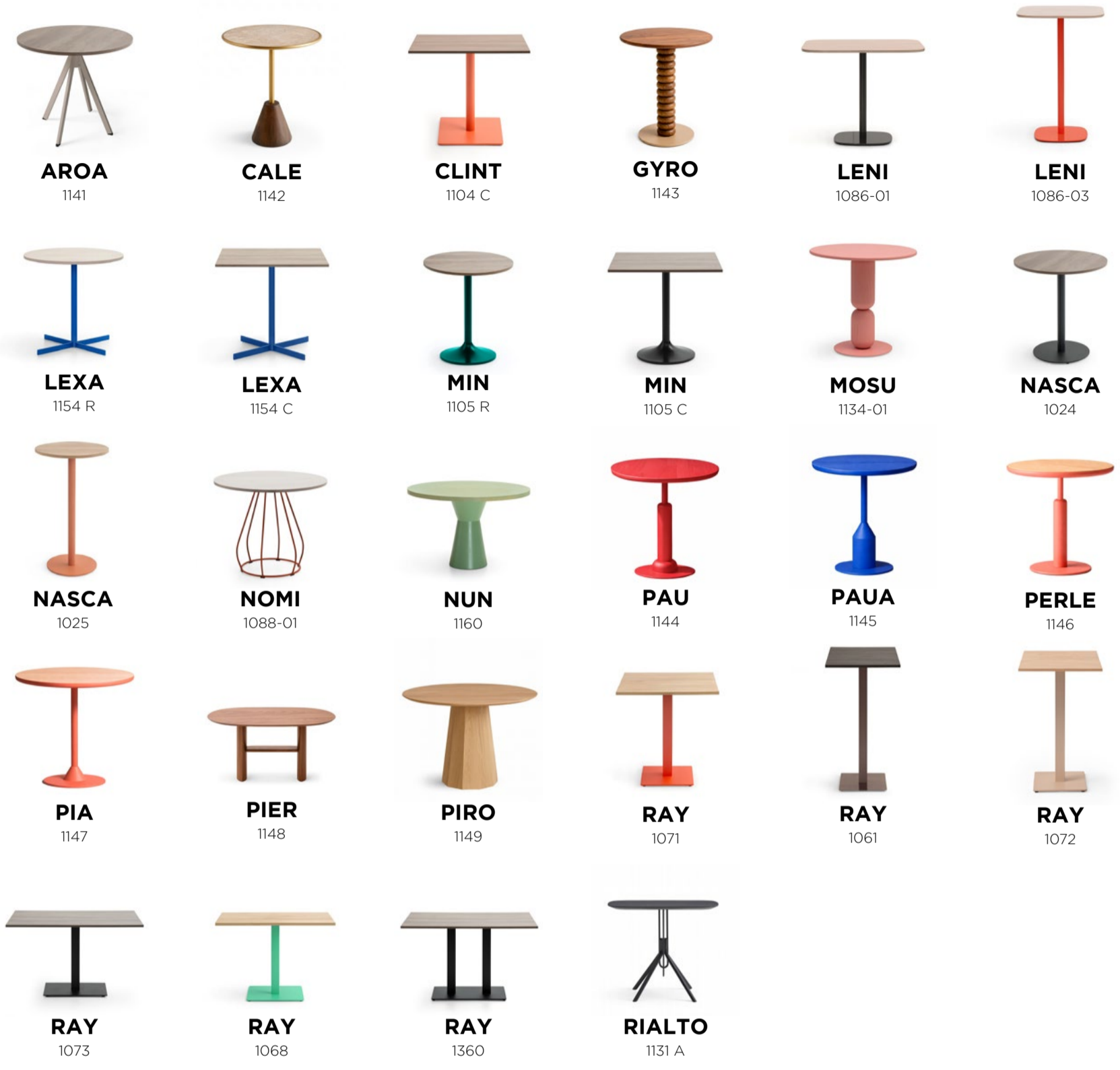


SHOJI
5114



VALISE
5115

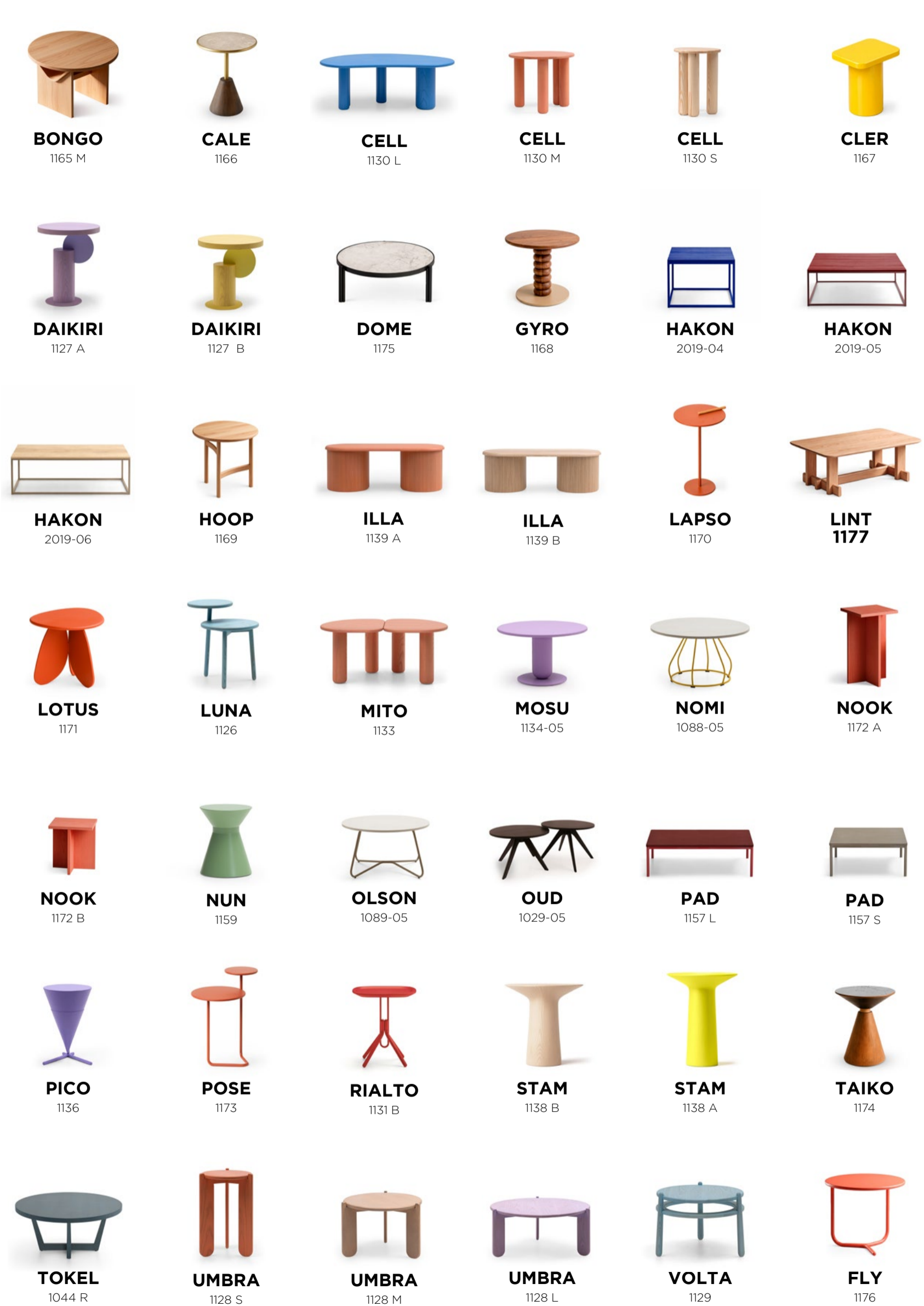
TABLES [mesas]



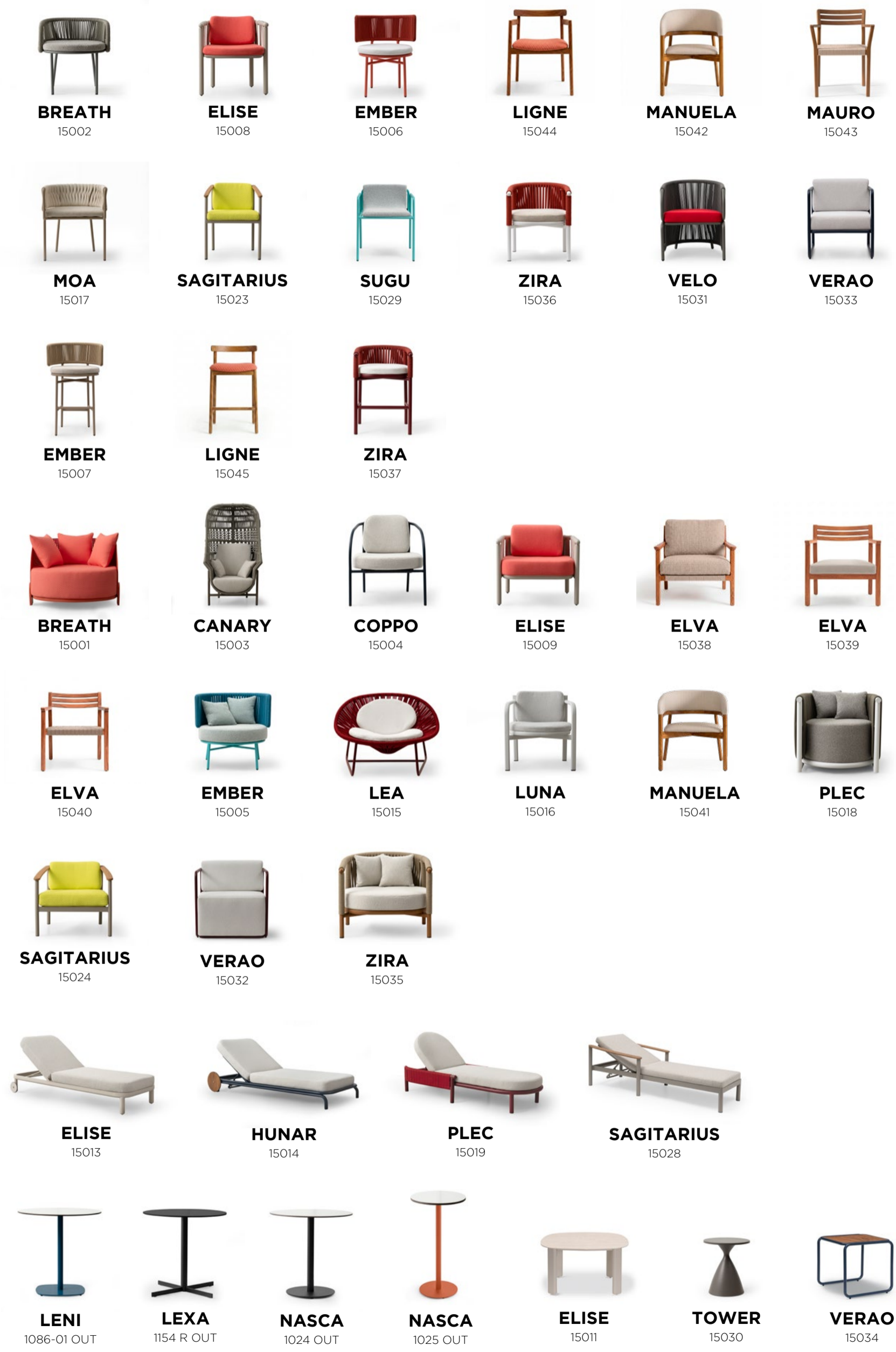
AUXILIARY TABLES [mesas auxiliares]



AUXILIARY TABLES [mesas auxiliares]



OUTDOOR **NEW** [exterior]



OUR GLOBAL PARTNERS



At TM Leader Contract, we conceive contract as a global vision of space. Evolving collections, bespoke solutions, and integral projects for hotels, restaurants, and hospitality environments, where design, functionality, and identity coexist naturally.

En TM Leader Contract concebimos el contract como una visión global del espacio. Colecciones en evolución, soluciones a medida y proyectos integrales para hoteles, restaurantes y entornos hospitality, donde diseño, funcionalidad e identidad conviven con naturalidad.

PU

RE

IDENTITY

